

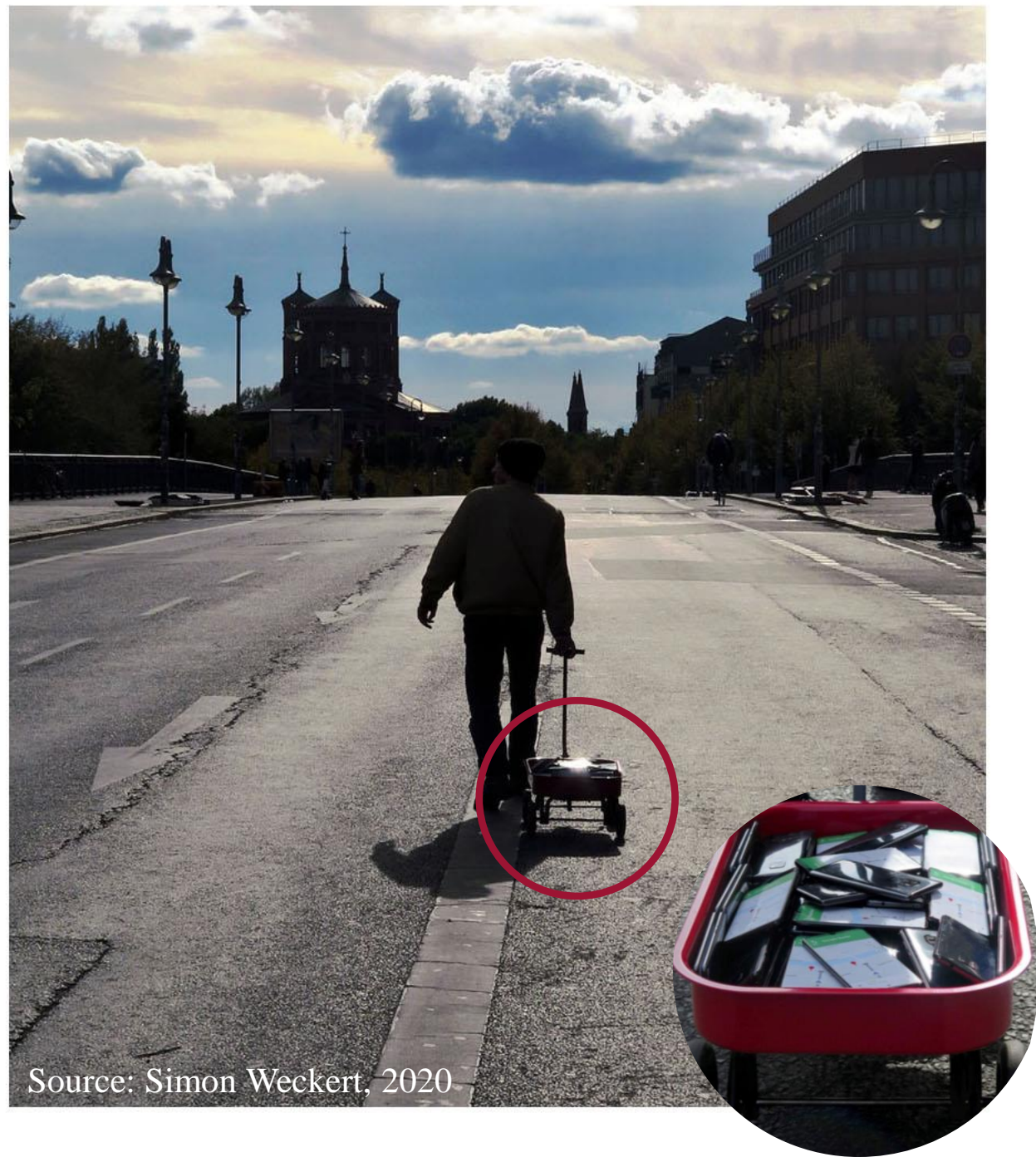
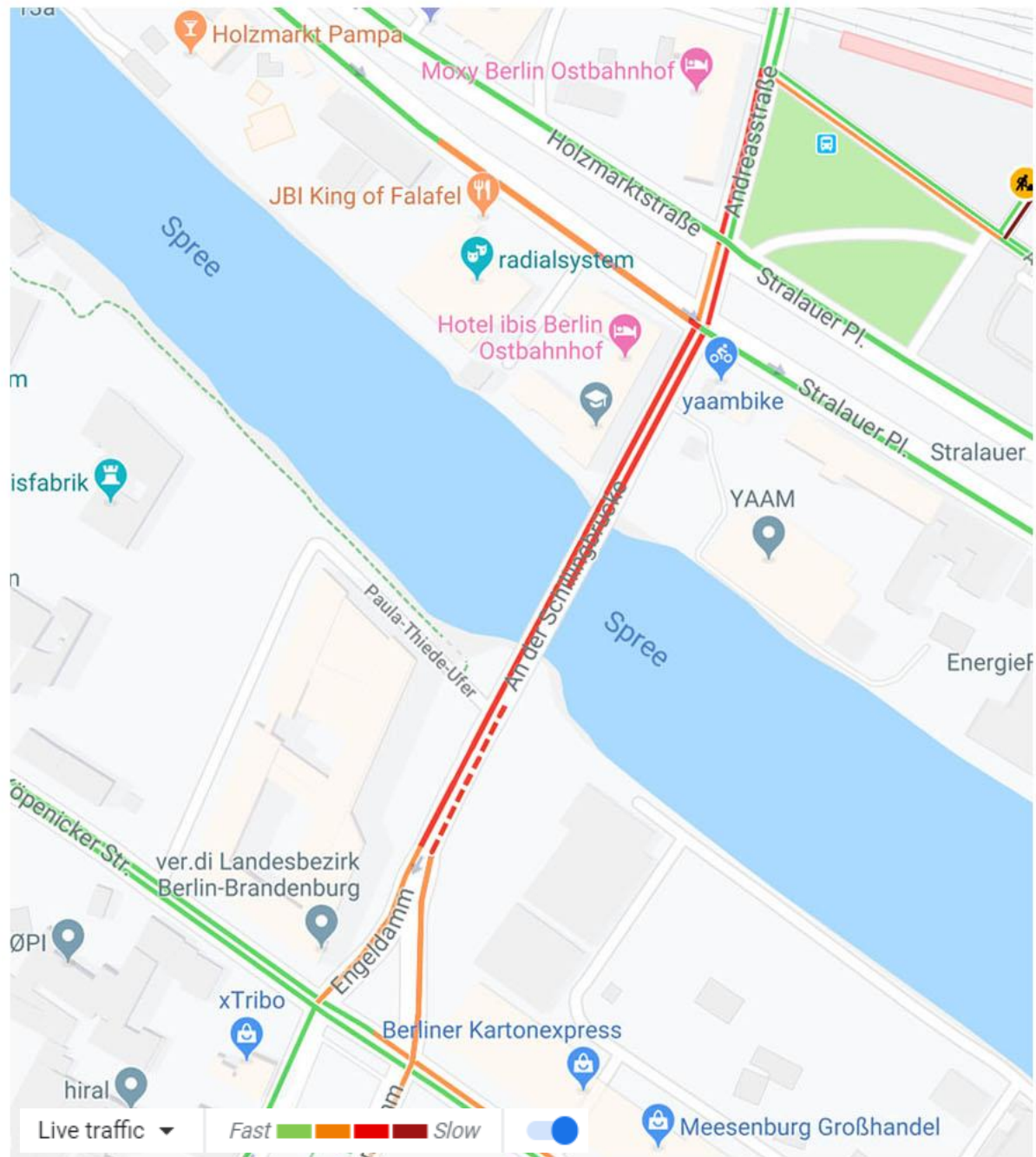


# « From Volunteer Ping to Community Chart »

Implementation of a « trusted-node » at CHS

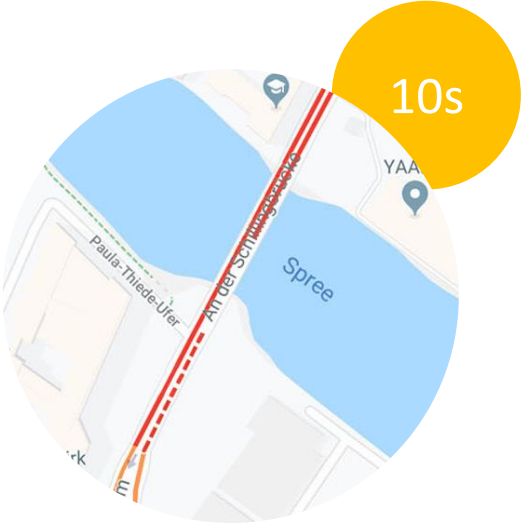
*Mathieu Rondeau<sup>1</sup>, Sylvain Gautier<sup>2</sup>, Gabriel Montpetit-Allard<sup>1</sup>, Yan Bilodeau<sup>1,2</sup>, Michel Breton<sup>1</sup>  
Canadian Hydrographic Service (CHS) ; <sup>1</sup>Community Hydrography ; <sup>2</sup>Technical Support*

*CIDCO Symposium 2023 - Rimouski*



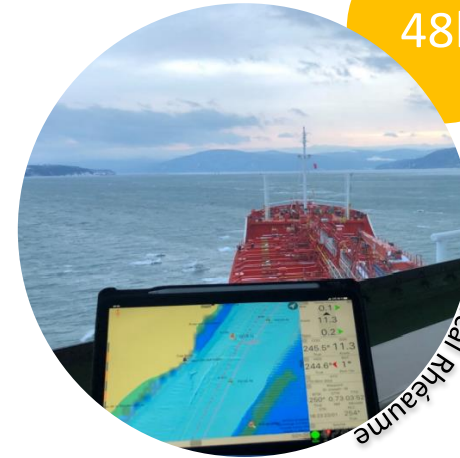
Source: Simon Weckert, 2020

# « From Data to Chart »





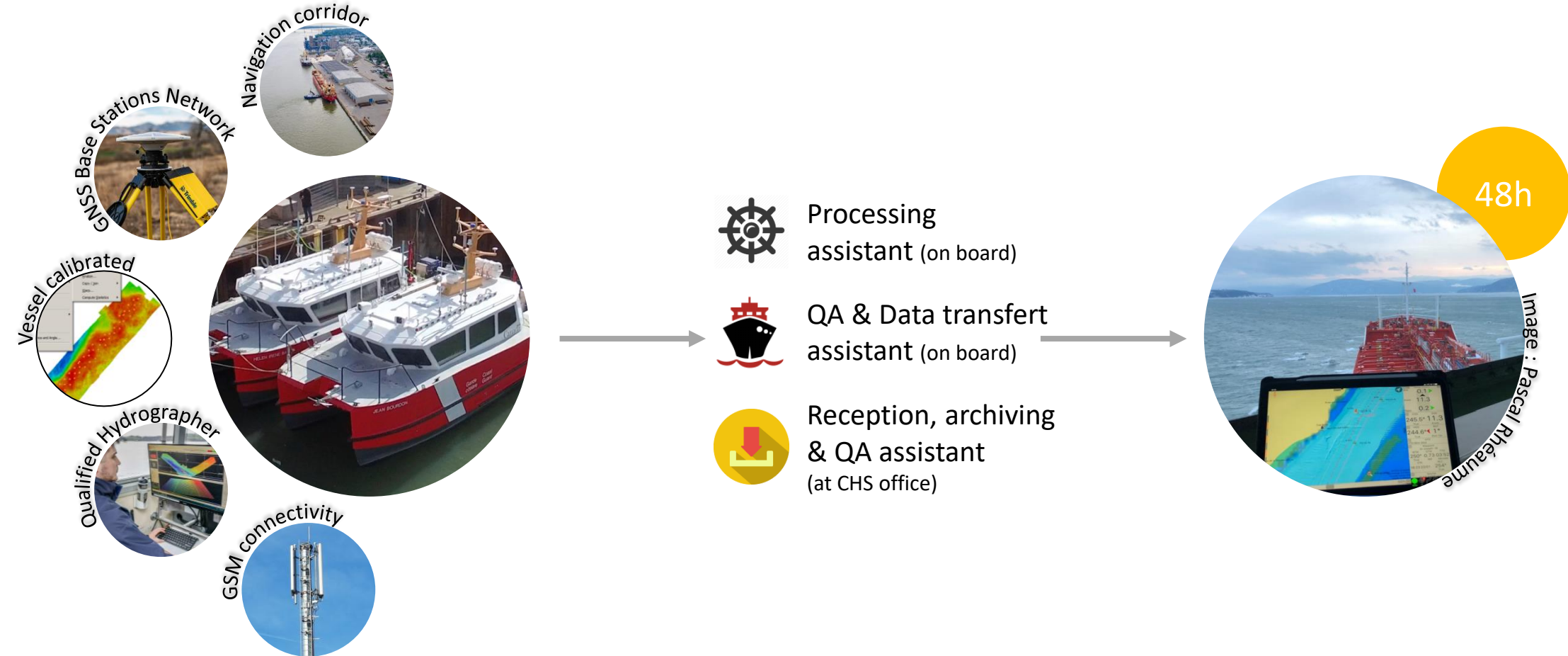
# « From Ping to S-102 »



48h

Image : Pascal Rheaume

# « From Ping to S-102 »

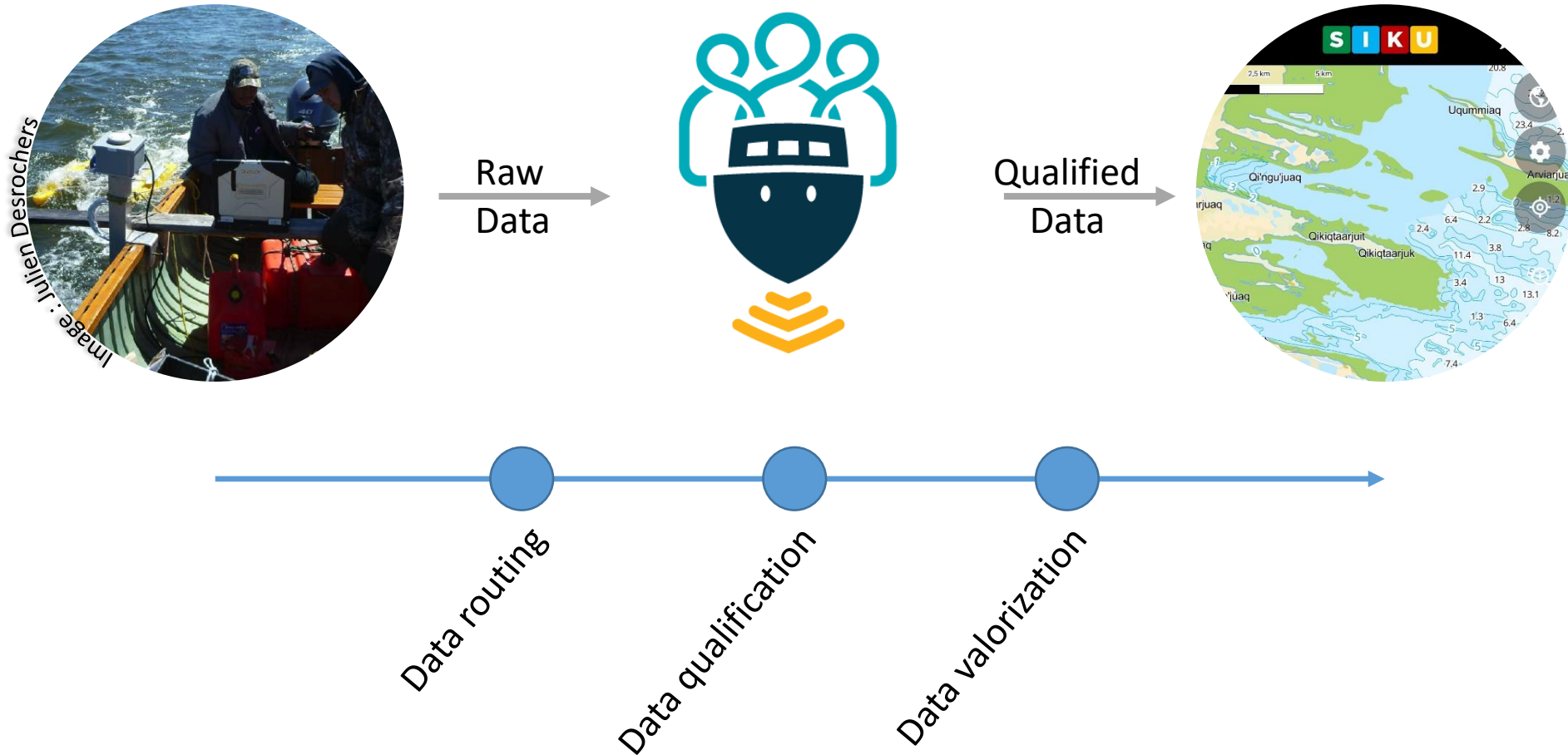


# « From Volunteer Ping to Community Chart »



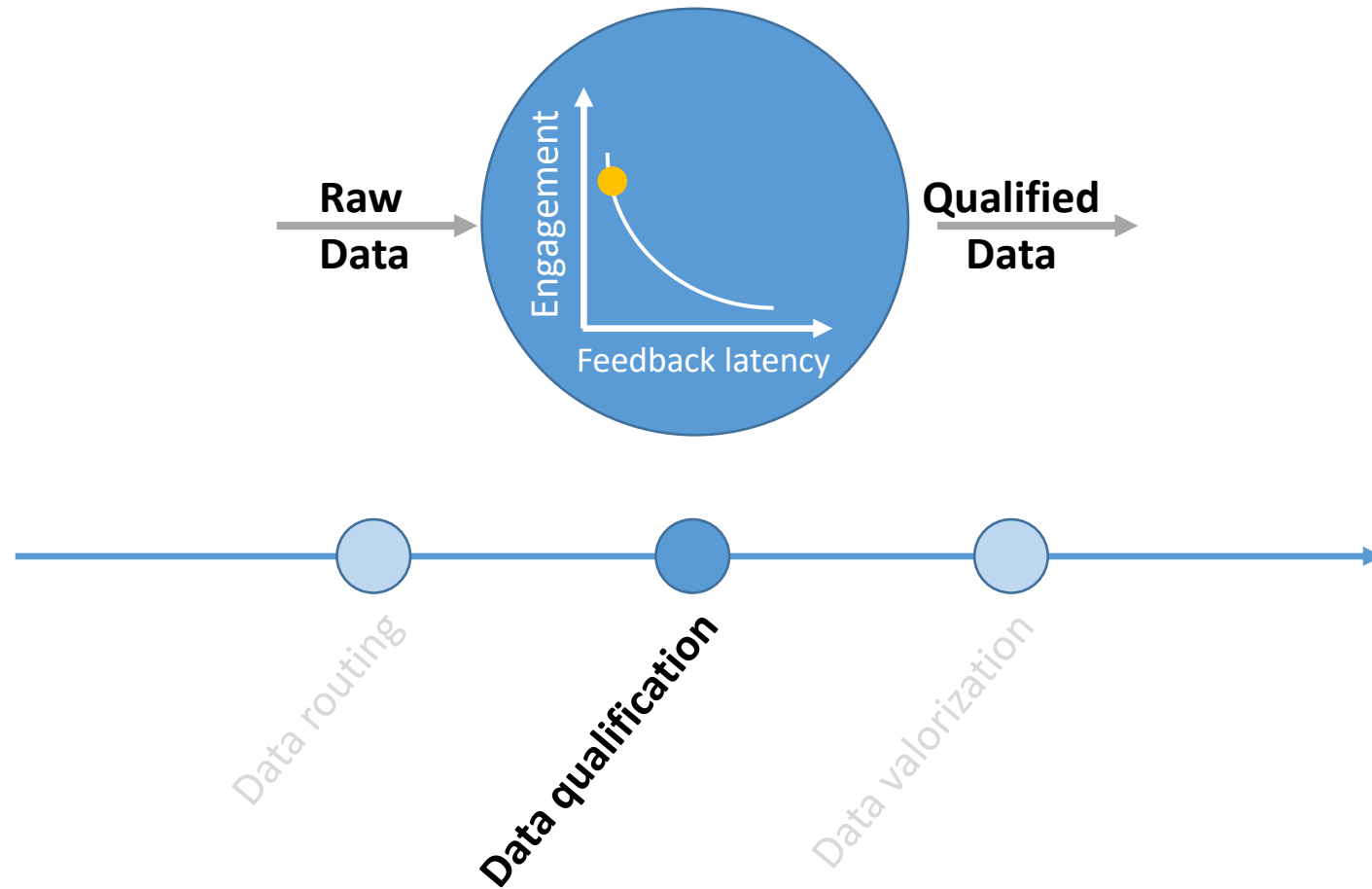
# « From Volunteer Ping to Community Chart »

Implementation of a « trusted-node » at CHS



# « From **Volunteer Ping** to **Community Chart** »

Implementation of a « trusted-node » at CHS





# « From Volunteer Ping to Community Chart »

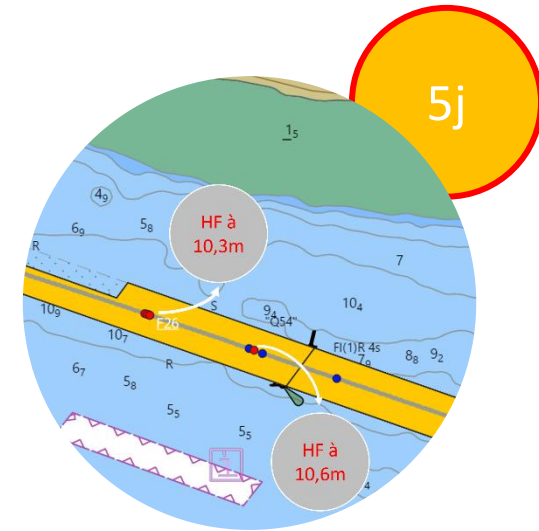
Implementation of a « trusted-node » at CHS



Raw  
Data

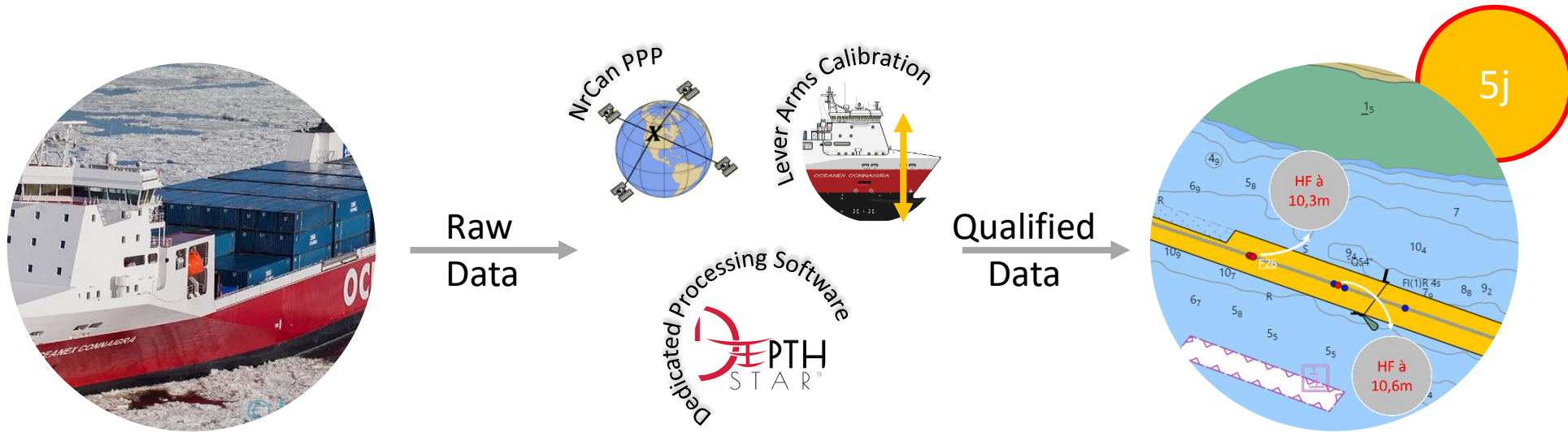


Qualified  
Data

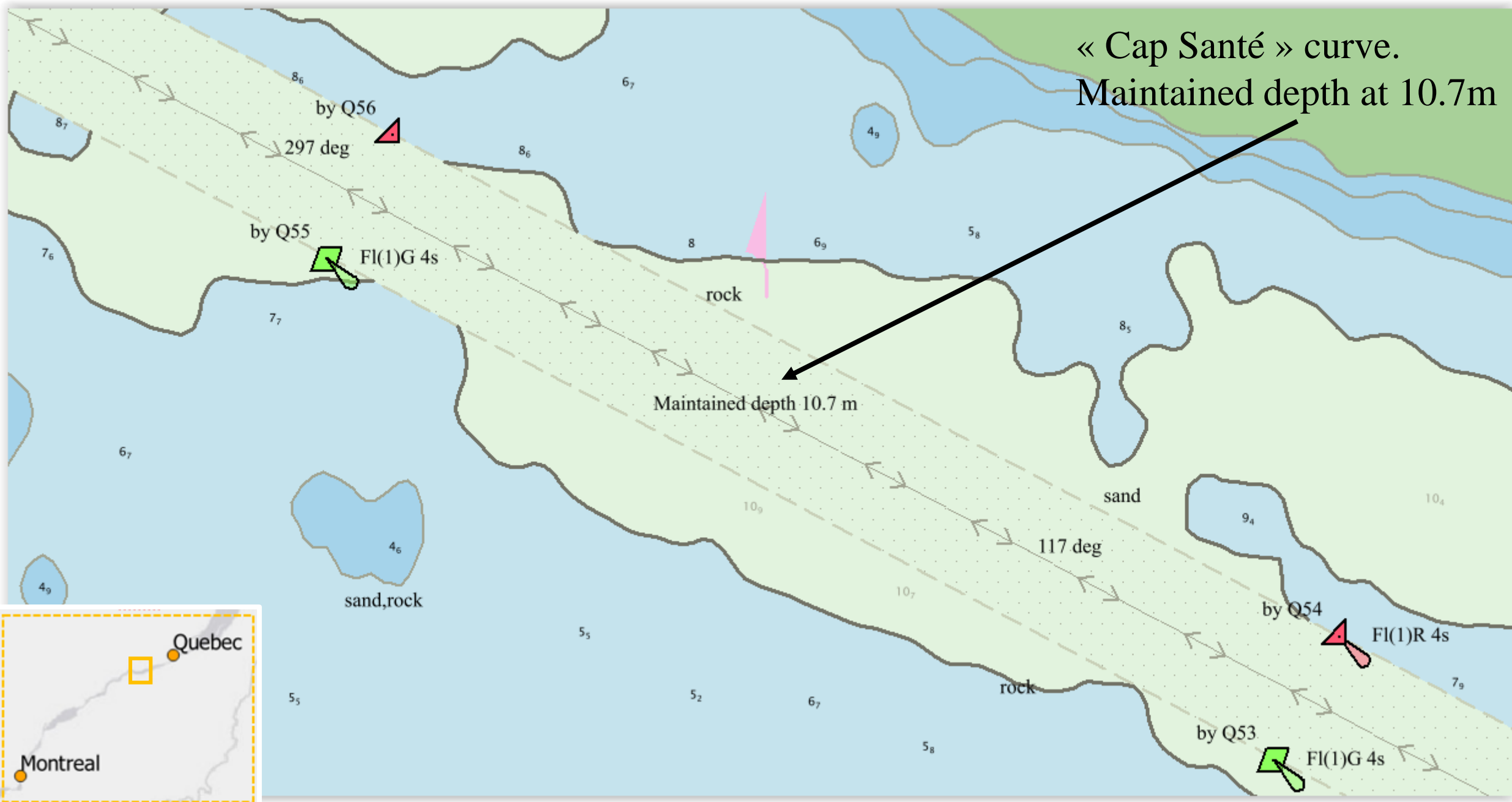


# « From Volunteer Ping to Community Chart »

Implementation of a « trusted-node » at CHS



« Cap Santé » curve.  
Maintained depth at 10.7m



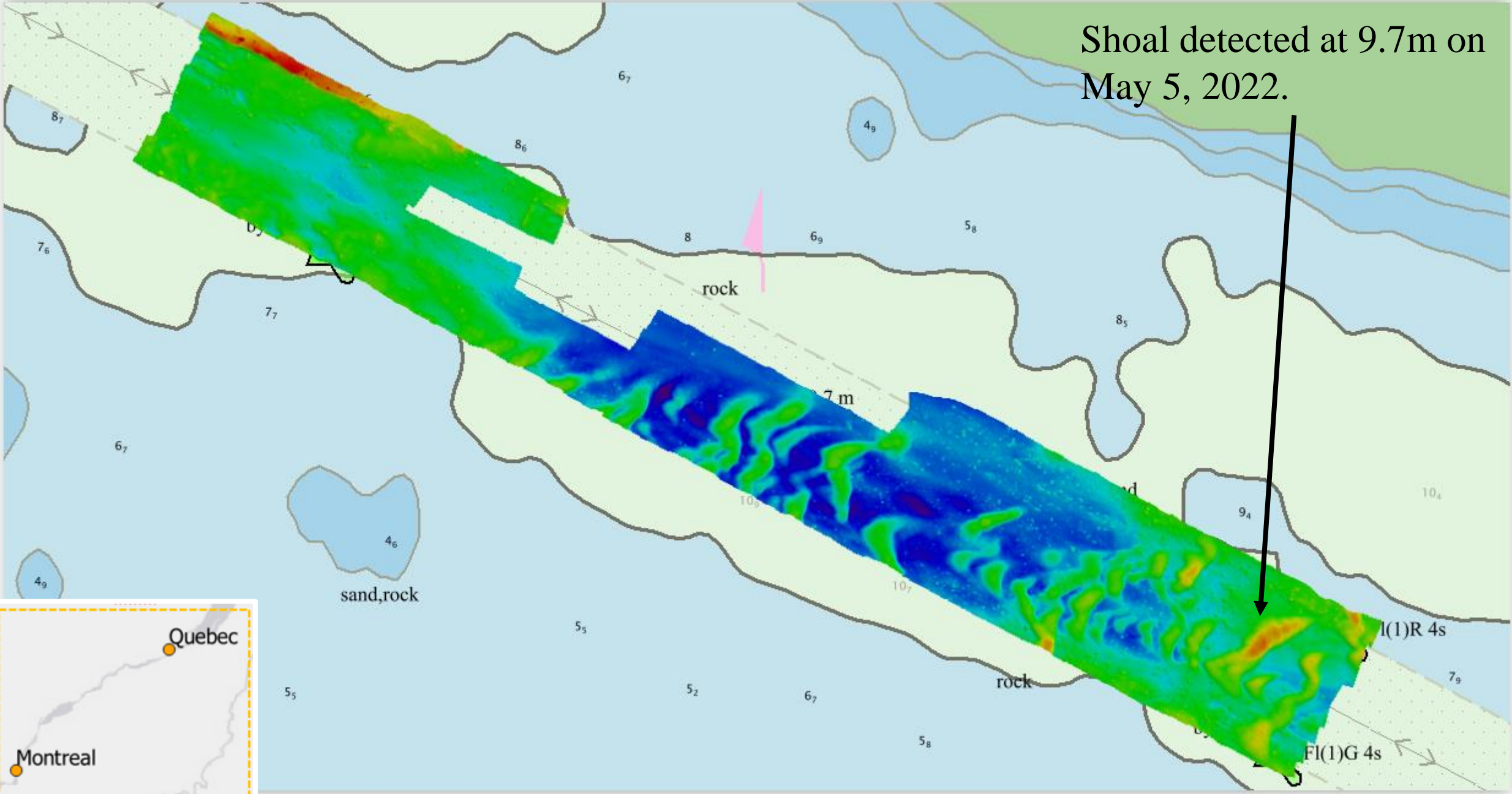


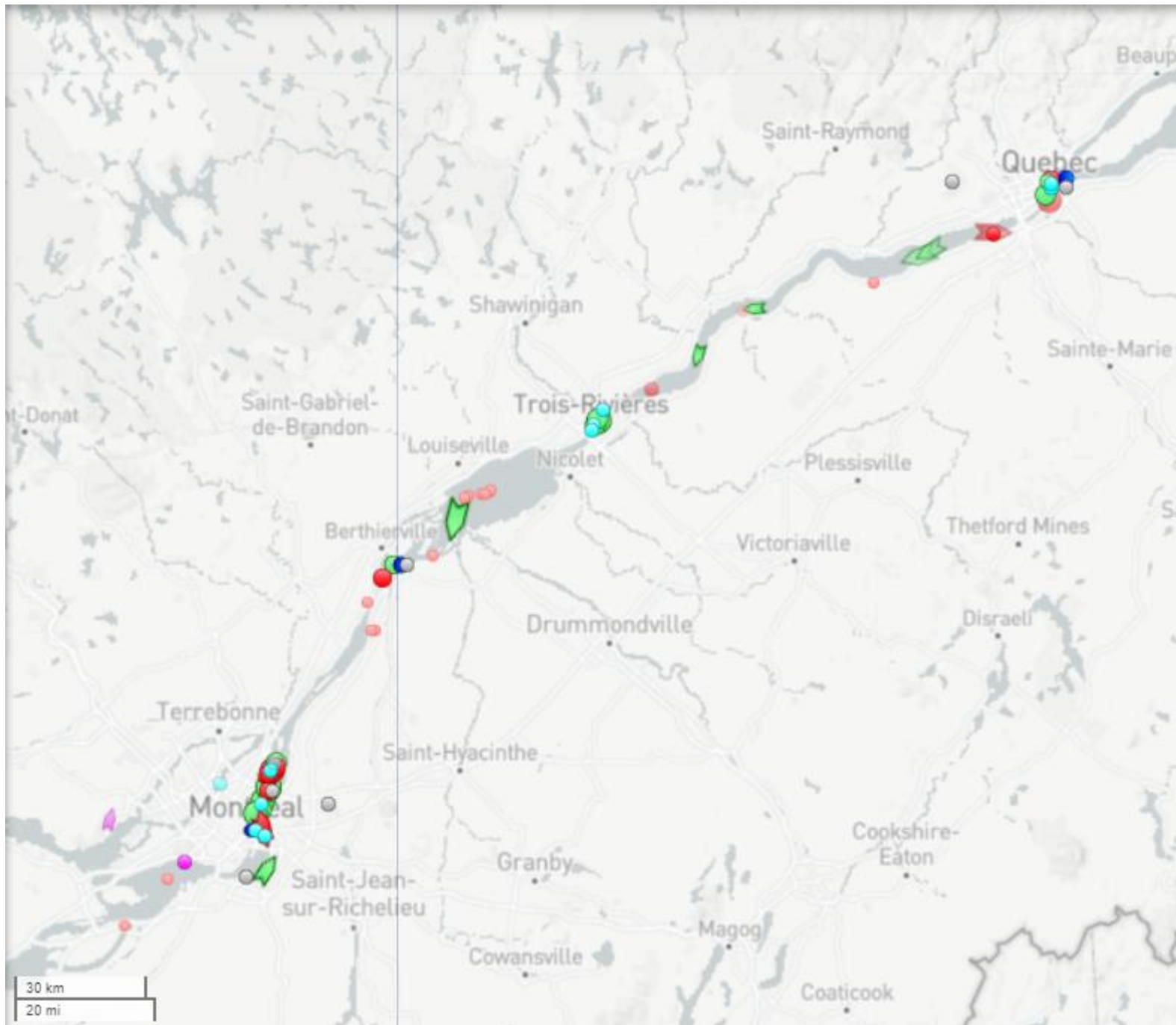


CHS survey boats are in dry dock from November to April.




Shoal detected at 9.7m on May 5, 2022.





✕
OCEANEX CONNAI...
Ro-Ro Cargo




© Barry Dewling  
www.marine-traffic.com

☰
Add to Fleet
Vessel Details

CA SJF
CA MTR

ATD: 2023-03-29 06:58
 **ETA:** 2023-03-31 13:00
i



← PAST TRACK
 

📍 ROUTE FORECAST

Navigational Status: <b>Underway Using Engine</b>	Speed/Course: <b>18.7kn / 204°</b>	Draught: <b>7.5m</b>
Received: <b>3 minutes ago</b> (AIS Source: <u>OCEANEX CONNAIGRA</u> Operated By OCEANEX)		



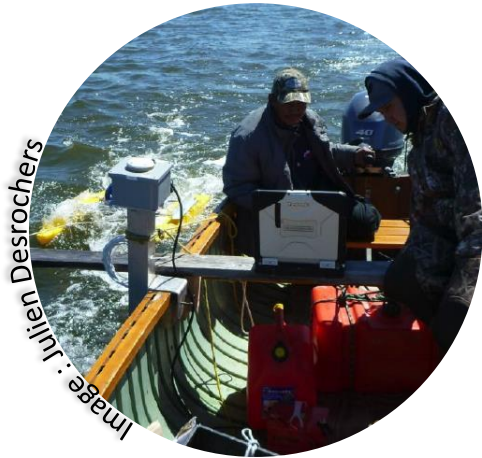
# Oceanex Connaigra Crowdsourced bathymetry (CSB) to support the waterway monitoring in winter, between Quebec and Montreal.



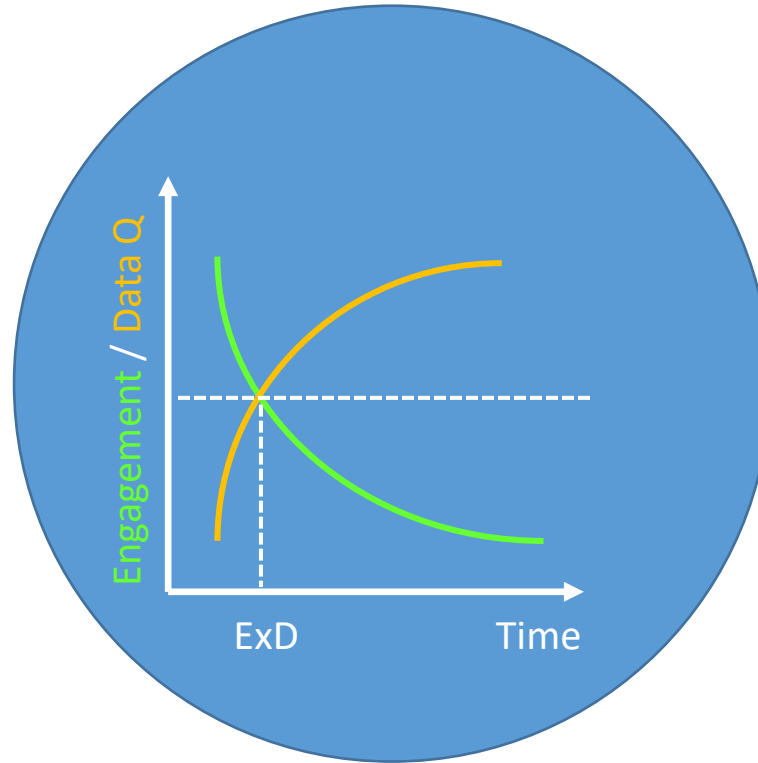




# Conclusion: $T_{(\text{RawData to QualifiedData})} < \text{Expiration Date}$



Raw  
Data



Qualified  
Data





MERCI !

Questions ?

Mathieu Rondeau

[mathieu.rondeau@dfo-mpo.gc.ca](mailto:mathieu.rondeau@dfo-mpo.gc.ca)